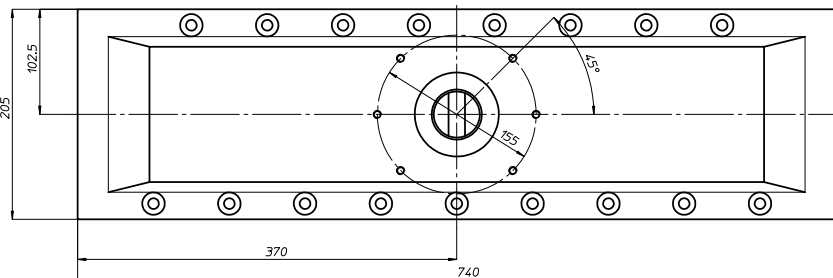
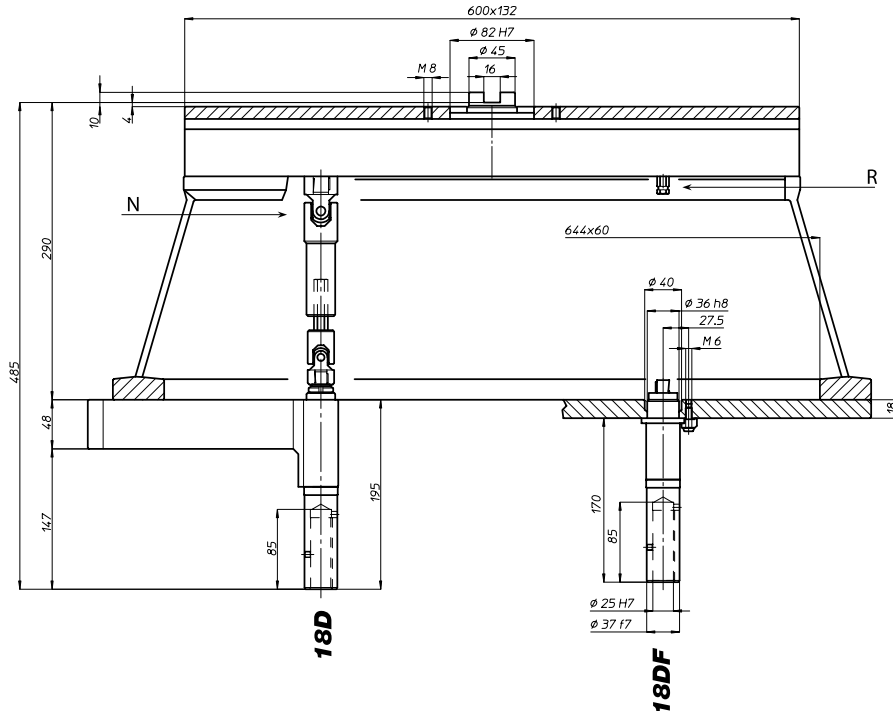
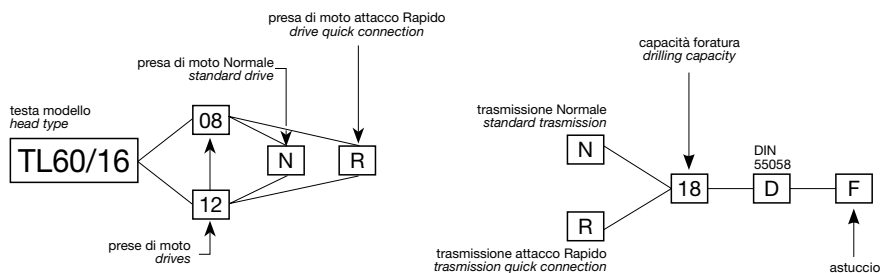


TL60/16

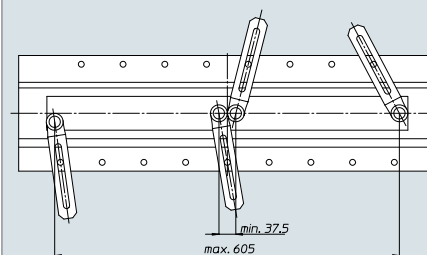
Codice testa
Head code

Codice mandrino
Spindle code



	N° prede di moto Nr. spindle drives	08-12
	Rapporto Ratio	1-1
	Capacità di foratura Drilling capacity acciaio R=500 N/mm ² ghisa: GG25	16 18
	Maschiatura Tapping	M14
	Attacco utensile Type of spindle D	DIN 55058 Ø25
	Peso gruppo testa Head weight	Kg 36
	Peso gruppo mandrino Spindle-set weight	Kg 2,5

area di lavoro
working area



BAH

TA-CP

TA

MO

HT

VH

TSI/TSX

T

MT-TC-TC3

Accessori
Accessories

Appendice tecnica
Technical supplement

