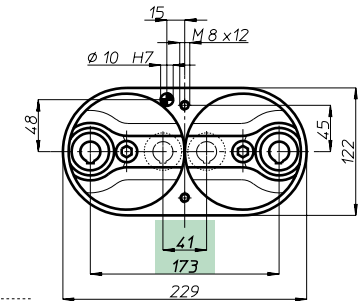
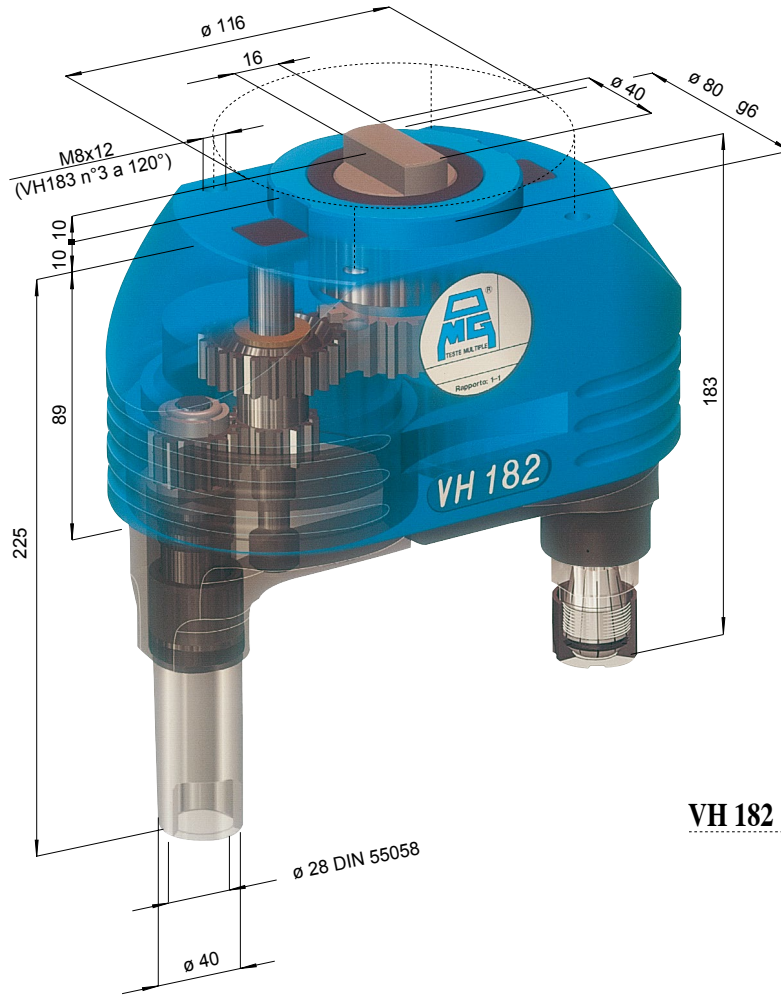


CAPACITA' FORATURA
DRILLING CAPACITY ϕ 20

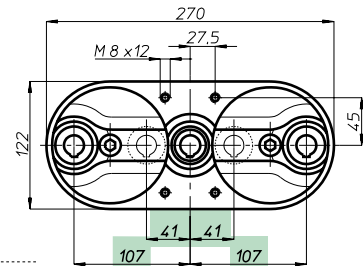
VH

modello 18

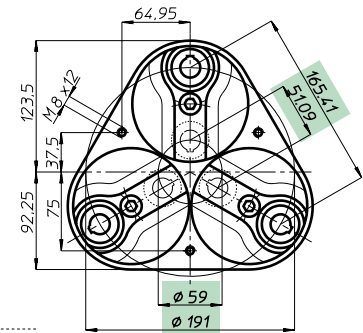
Teste multiple ad assi variabili • Variable axis heads



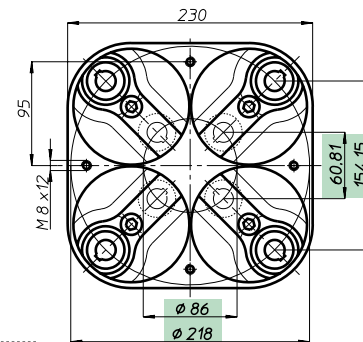
VH 182



VH 183 L



VH 183



VH 184

Testa modello Head type	VH 182	VH 183 L	VH 183	VH 184
Articolo Item	VH 182 P	VH 183L P	VH 183 P	VH 184 P
Attacco utensile Spindle type	ER 25 - max ϕ 16			
Articolo Item	VH 182 D	VH 183 LD	VH 183 D	VH 184 D
Attacco utensile Spindle type	DIN 55058 - ϕ 28			
N. mandrini Spindles nr.	2	3	3	4
Campo di lavoro min.	41	41 + 41	ϕ 59	ϕ 86
Centre distances max.	173	107 + 107	ϕ 191	ϕ 218
Capacità foratura Drilling capacity	Acciaio Rm 500 N/mm ² - ϕ 18			
Maschiatura Tapping	Ghisa GG25 - ϕ 20			
Rapporto Ratio	M 14			
Velocità RPM	1 - 1			
Peso Weight	8,3	10,75	12	15,75

